



**THE DRAWING ROOMS
OF BERRY**
LUXURY RETREAT

ACCESSIBILITY GUIDE

Contents

Introduction.....	3
Accessibility in the local area (Berry and surrounds)	3
Babies and children	3
Bedroom and bathroom access.....	4
Booking and check-in.....	5
Dietary requirements	5
Floorplans	5
Treetops Lodge	6
Rainforest Lodge.....	6
Lyrebird Lodge	7
Wattamolla Lodge	7
Garden walk.....	8
Parking.....	8
Transport	8

Introduction

The Drawing Rooms of Berry is committed to ensuring **everyone** feels welcome and comfortable whilst staying at our accommodation. We pride ourselves on being as inclusive as our physical location (on a mountain) allows.

We offer completely self-contained accommodation within 4 separate, private lodges. Our lodges are:

- Treetops – a 1-bedroom lodge with outdoor spa, ideal for couples
- Rainforest, Lyrebird and Wattamolla – 2-bedroom, 2-bathroom lodges ideal for couples, families or groups.

Due to the structure and layout of the accommodation buildings, there are limitations on how we can accommodate those with mobility issues or disabilities. This is because each lodge is accessible via steps and Rainforest, Lyrebird and Wattamolla all contain a set of internal stairs too. Please read on for more information.

The purpose of this document is to:

- Outline how we are able to provide accessible accommodation;
- Be clear about any accessibility limitations so you can make an informed choice about where you book your stay.

Please do reach out to us if you have any special needs or access requirements to let us know how we can best support you to enjoy your stay with us.

Accessibility in the local area (Berry and surrounds)

In planning your visit to Berry, you will want to consider whether our accommodation is right for your needs and we completely understand that in some cases, due to steps in the lodges, it may not be. However, if you do decide to book with us, here are some other reference points for accessibility in the local area:

Boongaree Rotary Nature Play Park in Berry – includes inclusive play equipment and accessible toilet (there is also an accessible toilet next to Apex Park)

The Australian Good Food Guide recommends dining options in Berry and surrounds which provide accessible dining, including The Garden which has a spacious outdoor dining area:

<https://www.agfg.com.au/restaurants/south-coast-nsw/berry/disabled-category>

For further afield, the Shoalhaven Tourism website provides some helpful information here:

<https://www.shoalhaven.com/inclusive/>

Babies and children

The property is very family-friendly with 3 lodges available to book which have two bedrooms and two bathrooms, large living spaces and two outdoor decks. There is a signposted Garden Walk to lead you out into our beautifully-kept garden where you can spot lots of interesting wildlife and enjoy views of mountains and rainforest.

We know that for parents, when travelling with your little ones there is a lot to consider in terms of logistics, and you want to know that there will be plenty to keep them entertained during your stay! We hope the information below will help make planning your stay with us that bit easier.

Bedrooms – each of our two-bedroom lodges (Rainforest, Wattamolla and Lyrebird) have a downstairs bedroom with ensuite bathroom which is ideal for children as the king bed is splittable into two king beds. Simply let us know at the time of booking which bed formation you would prefer.

Additionally, the upstairs bedroom in these lodges also has a very comfortable sofa bed so you are welcome to have a child sleep up there with you. Again, please request the sofa bed option at the time of booking.

Portacots and highchairs - we have portacots and highchairs available on request at the time of booking, or you are welcome to contact us during your stay if you find you require one of these items – we will be more than happy to bring them over to you.

Prams – each of our two-bedroom lodges (Rainforest, Wattamolla and Lyrebird) have their own parking space. From the parking space, there are 3 steps which lead up to a covered wooden deck where you would be able to store your pram if you wish.

Activities – there is so much to do in the local area but we have set up a couple of simple activities on the property to keep your little ones entertained!

- Garden Scavenger Hunt - in the drawer of the TV console you will find a Scavenger Hunt which will lead you around the garden. If you can find and tick all of the landmarks please come up to the lobby at Reception and help yourself to a prize!
- Wildlife Observation & Colouring – you can help us to monitor our local wildlife populations by using the 'Australian Wildlife Observation Sheet' to record any wildlife sightings during your stay! There are also some colouring sheets showing some of the beautiful wildlife living on the property – and colour pencils provided.

Other entertainment – there are a few boardgames in each lodge but we also have a large collection of boardgames, books and DVDs at the front lobby. Simply follow the signs from your lodge up to Reception and you will find plenty to choose from in the lobby. You are welcome to borrow anything from here for the duration of your stay – we would kindly ask that you do return them to the lobby before you depart.

Bedroom and bathroom access

You may find it useful to refer to the floorplans for each lodge – see 'Floorplans' in this document – which show the number of external/internal steps in each lodge, so that you can make an informed decision before booking.

Rainforest, Wattamolla and Lyrebird Lodges – there are 2 steps leading from the car parking area onto a wooden deck. From here, the living area, bathrooms and one bedroom are all on one level, together with the outdoor dining area. There is a flight of steps up from this level to the upper level, where the master bedroom is located – please note this is a narrow staircase with a turn.

If you are able to comfortably walk up the 2 small steps at the entrance, you can choose to sleep in the downstairs bedroom with ensuite, thus avoiding using the staircase to the upper level.

The ensuite bathroom contains a walk-in shower, while the main bathroom contains a bath with shower incorporated.

Treetops Lodge – there is a flight of 9 steps up from the car parking area, into the living area. From there, the living space, bedroom, bathrooms and outdoor dining deck are all on one level. The outdoor dining deck is accessible via sliding doors. There are 4 steps leading from the outdoor area up to the spa area.

We are sorry for any inconvenience but please note that bathrooms do not contain handholds and neither bedrooms nor bathrooms have wider doorways.

Booking and check-in

We are very flexible with how you make a booking. You can book a stay with us through our website, by email or by telephone depending on what suits you best.

The Drawing Rooms of Berry proudly offers self-contained accommodation – this means there is no check-in desk or formal Reception, and the access code for your lodge will be provided to you by text message on the day of your check-in.

Nick, Lisette, Michael and Hannah are your hosts and live on-site – we always love to chat with our guests so you are welcome to pop up to the house to say hello, but there is no pressure to – the choice is yours! We are always available should you require any assistance during your stay – please don't hesitate to contact us.

Dietary requirements

We are always happy to accommodate any dietary requirements for our Breakfast Hampers, which you can pre-order at the time of booking your stay. For example, we can provide gluten-free bread, lactose-free yoghurts, and other options too – simply let us know what you need and we will do our very best to accommodate. We are a coeliac family so we completely understand the worries you may feel about finding options to suit your dietary requirements.

A bottle of **milk** is provided for every booking – we are happy to switch this out for a lactose-free option if you prefer.

Please note that there is a range of breakfast cereals provided in each lodge, kept in sealed jars – these do contain **gluten**.

In terms of local restaurants, we find they are very accommodating in terms of dietary requirements and you simply have to ask.

Floorplans

In considering your own accessibility requirements, you may find it useful to refer to the floorplans for each lodge, on the next pages. Each image shows the exact number of steps at the entrance to each lodge, and internally within the lodges, to help you determine whether it is a suitable option for your own needs.

Treetops Lodge

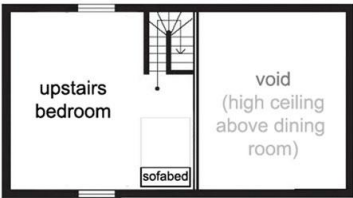
Floor Plan



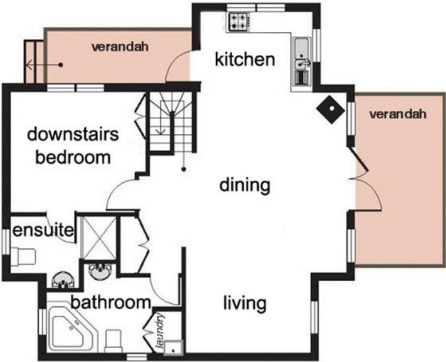
Rainforest Lodge

Floor Plan

mezzanine level



ground level



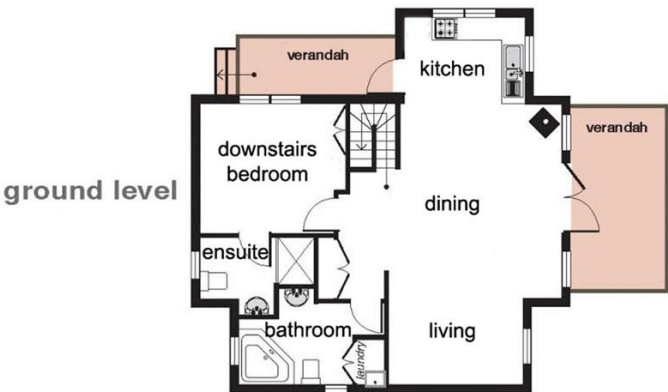
Lyrebird Lodge

Floor Plan



Wattamolla Lodge

Floor Plan



Garden walk

The driveway within our property is a sealed road but please be aware that given our rural location and the extremes of flooding and drought we experience here, there are occasionally cracks in the road and rough sections so when out walking (or using bikes/scooters), please take due care. You are welcome to walk along the driveway or across the lawns – there are a few small hills but lots of flatter sections too. There are multiple benches and spots to sit – so please take your time and enjoy the view.

Parking

There is private parking for 2 cars at each lodge, just outside the lodge entrance. Please note this is not covered parking, except at Treetops Lodge, where there is undercover space for one car.

Please refer to the [property map](#) for a fuller understanding of the layout and location of the lodges within the property.

Transport

The property is approx. 10 minutes' drive to Berry village along sealed roads in good condition. Berry has its own train station and there is a local taxi service (Berry Taxis – 02 4464 3181) which must be pre-booked. Please note there is no Uber service in the area.

[Noble Tours](#) is a winery tour operator, offering a transport service to and between wineries in the region within 7, 8 and 12 seater airconditioned vehicles. You can also book their standard sedan which seats 3-4 people - <https://nobletraveltours.com.au/private-driver/>. You must make any booking with Noble Tours in advance as they do get booked up. You will need to discuss accessibility requirements with them directly to see how they can best assist you.